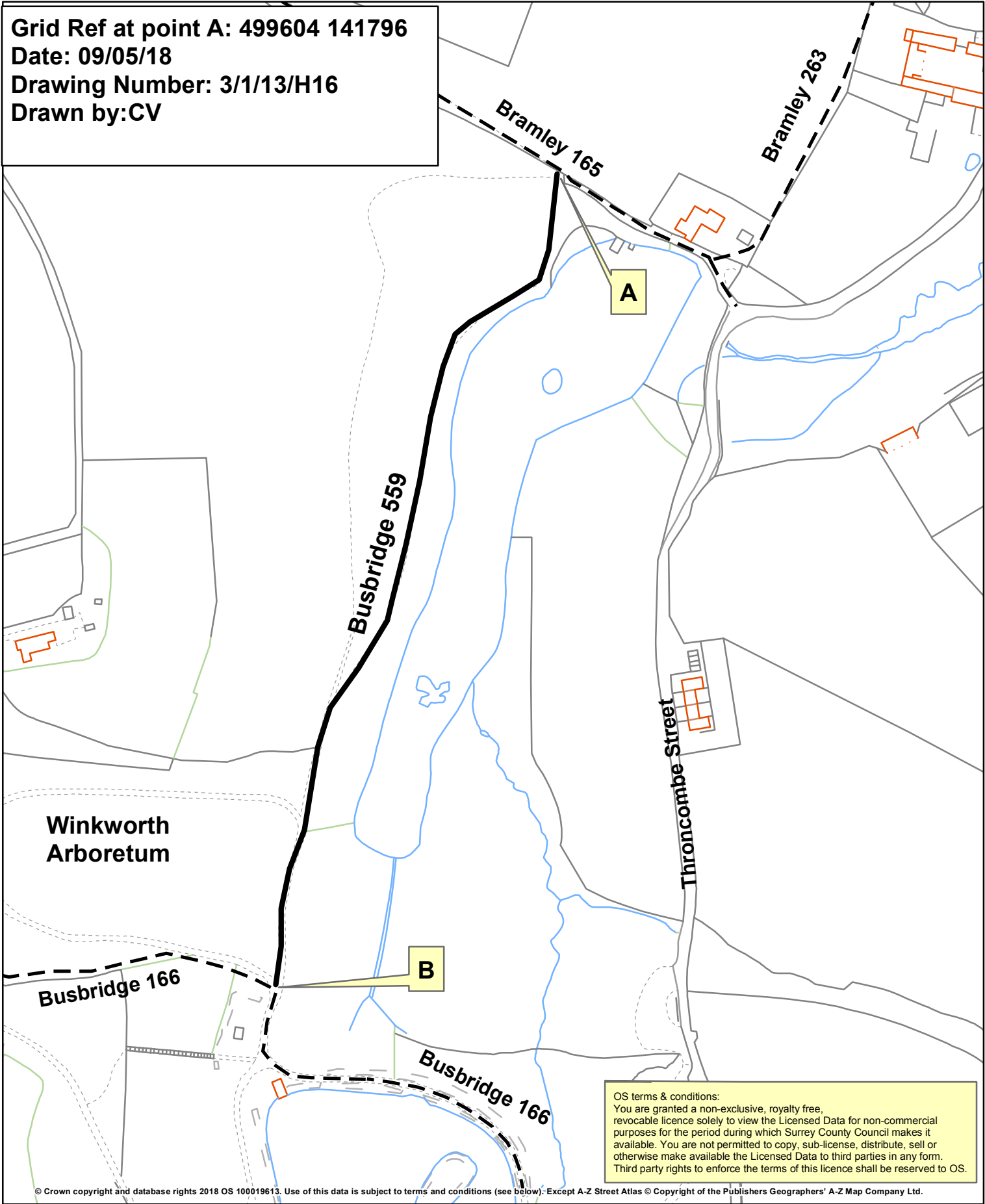


**WILDLIFE AND COUNTRYSIDE ACT 1981
MAP MODIFICATION ORDER
BOROUGH OF WAVERLEY**

ITEM 9 **ANNEX H**

**Grid Ref at point A: 499604 141796
Date: 09/05/18
Drawing Number: 3/1/13/H16
Drawn by: CV**



OS terms & conditions:
You are granted a non-exclusive, royalty free, revocable licence solely to view the Licensed Data for non-commercial purposes for the period during which Surrey County Council makes it available. You are not permitted to copy, sub-license, distribute, sell or otherwise make available the Licensed Data to third parties in any form. Third party rights to enforce the terms of this licence shall be reserved to OS.

© Crown copyright and database rights 2018 OS 100019613. Use of this data is subject to terms and conditions (see below). Except A-Z Street Atlas © Copyright of the Publishers Geographers' A-Z Map Company Ltd.



1:2,500

Public Footpath 559 (Busbridge) A-B —————
Length 458m
Unaffected Public Footpaths - - - - -
 Page 101



This page is intentionally left blank